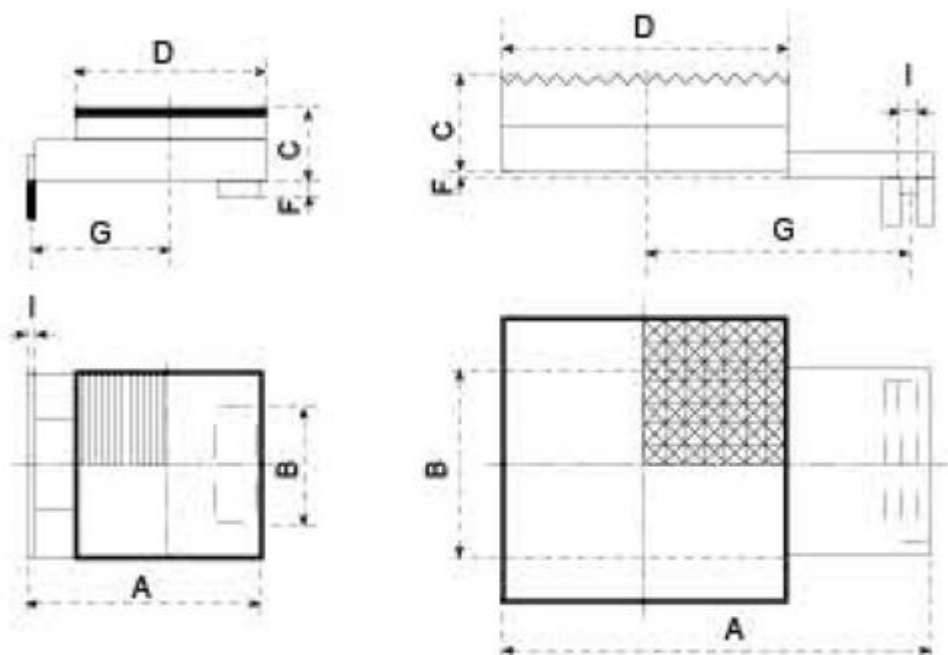


PC SERIES PACKING PLATES FOR RS-SERIES MACHINERY SKATES



Packing Plates are used to compensate for the height differences on RS Roller skates when other skates have a TR series turntable.

They are fitted with a rubber top to help reduce marking of the machinery.

PACKING PLATES FOR RS SERIES ROLLER SKATES

| MODEL | Dimensions | | | | | | | Weight (kg) |
|-------|------------|-----|----|-----|---|-----|----|-------------|
| | A | B | C | D | F | G | I | |
| PC10 | 153 | 74 | 37 | 120 | 8 | 88 | 5 | 3.7 |
| PC20 | 153 | 86 | 37 | 120 | 8 | 88 | 5 | 3.7 |
| PC30 | 175 | 95 | 45 | 130 | 8 | 105 | 5 | 5.3 |
| PC40 | 270 | 114 | 61 | 180 | 3 | 165 | 11 | 13.8 |
| PC50 | 350 | 128 | 61 | 200 | 3 | 235 | 11 | 18.8 |

