

Introducing the...

MID-EPT15



**FULLY ELECTRIC
PALLET TRUCK**

MID-EPT15

FULLY ELECTRIC LITHIUM PALLET TRUCK

MID-EPT15 is a new streamline and highly efficient fully electric pallet truck.

The truck features a very reliable 0.75kw brushless maintenance free driving motor, coupled together with a highly efficient lithium battery giving maximum running time between charges.

To allow the unit to be constantly operated, you also have the option of purchasing extra batteries which are easily interchangeable (within seconds). These allow the truck to be used on a fully charged battery, whilst the spent battery is being charged with the supplied external battery charger.



Rated at 1500kg capacity and a slope/climbing gradeability of 4% laden, 10% unladen—this is a powerful machine with average life 3 times greater than a manual pallet truck. Despite this, it's a compact unit, only 32mm longer than a standard pallet truck.

The ergonomic tiller is a multi-function handle, which helps reduce fatigue and will automatically return to the vertical position when released. It features an emergency stop, forward/reverse butterfly switch, lifting/lowering, horn, LED screen displaying battery life.



Features non-marking Polyurethane wheels with Integral double fork wheels—ideal for pallets of an open or closed designs

Invest and Improve your efficiency now, whilst protecting your staff from strains and injury.

SPECIFICATIONS

CHARACTERISTICS

Capacity	kg	1500
----------	----	------

DIMENSIONS

Load Center	mm	600
Maximum fork height	h3	mm 197 (+/-2mm)
Lowered fork height	mm	82 (+/-2mm)
Overall fork width	mm	550 / 685*
Fork Length	L	mm 1150 / 1220*
Fork thickness	b1	mm 58
Fork width	E	mm 160
Overall length	L1	mm 1552 / 1622*
Overall height (with tiller)	h4	mm 1276
Overall height (without tiller)	h1	mm 520
Rear body length	mm	402
Rear body width	mm	550 / 685*
Minimum turning radius	wa	mm 1353
Minimum aisle width required (800x1200mm pallet)	mm	1887
Minimum aisle width required (1000x1200mm pallet)	mm	1918

PERFORMANCE

Maximum travelling speed	laden	km/h	3.5
	unladen	km/h	4
Maximum lifting speed	laden	m/s	19
	unladen	m/s	19
Maximum lowering speed	laden	m/s	38
	unladen	m/s	38
Gradeability	laden	%	4
	unladen	%	10

WHEELS

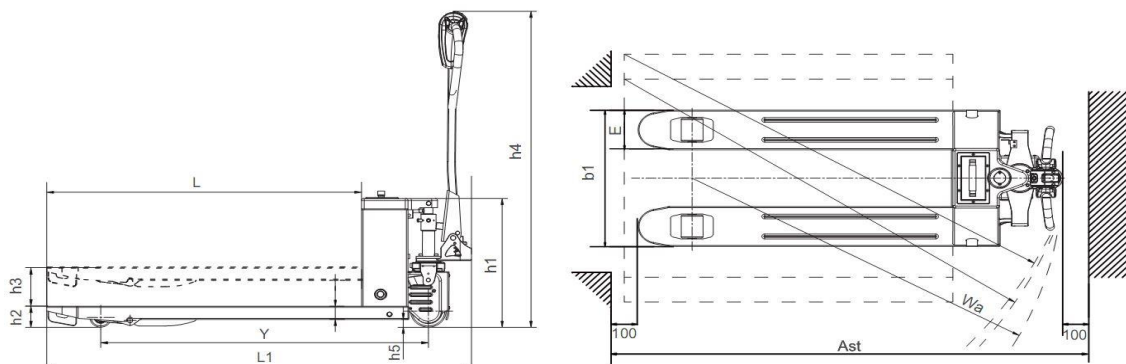
Type	Polyutherane (PU)	
Driving (steer) wheel	mm	130x55
Loading wheel	mm	80x70mm

MOTOR

Travelling	kw	DC 0.45
Lifting	KW	DC 0.5

Battery

Voltage	v	48
Capacity / Type	Ah	10Ah / Lithium



*685x1220mm fork sizes are available on request (540x1150mm forks are supplied as standard)